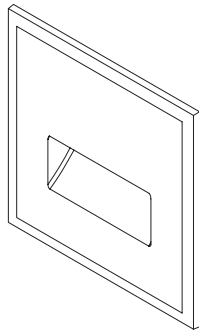
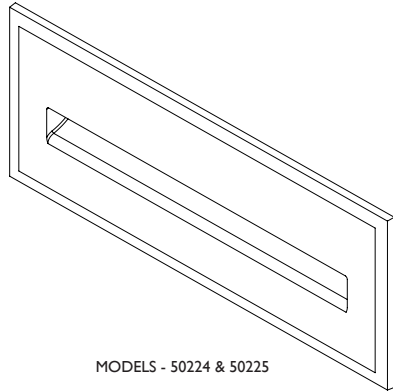


HVAC GRG DIFFUSER & VENT

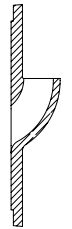
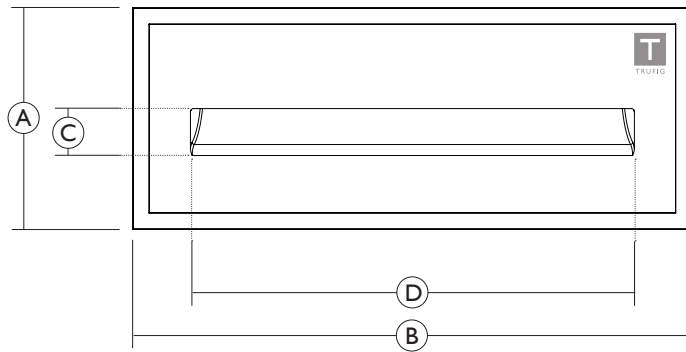
THREE SIZES: 9X4, 24X1-5/8, & 36X1-5/8



MODEL - 50223



MODELS - 50224 & 50225



SECTION VIEW

DESCRIPTION:

Applications:

HVAC GRG Diffusers and vents are designed for wall and ceiling installations. The mounting platforms are available in panel thicknesses of 5/8" only.

Flush Finish:

Platform technology allows for a zero-sightline, flush finish. Solid cast technology creates a seamless transition from air opening to wall, or ceiling surface.

Finish:

Front surface material can be primed and painted like any other gypsum finish material.

TECHNICAL:

Materials:

Panel - Glass Fiber Reinforced Gypsum (GRG or GFRG) - Cast gypsum reinforced with fiberglass material. Material is impact, mold and moisture resistant.

Environment:

For indoor use only - mounting platform can be used in damp locations such as kitchens and bathrooms.

	MODEL: 50223 9X4	MODEL: 50224 24X1-5/8	MODEL: 50225 36X1-5/8
A	16.25" [413mm]	12.00" [305mm]	12.00" [305mm]
B	16.25" [413mm]	30.25" [768mm]	42.00" [1073mm]
C	4.00" [102mm]	2.54" [64mm]	2.54" [64mm]
D	9.00" [229mm]	24.00" [610mm]	36.00" [914mm]
E	3.75" [95mm]	2.70" [69mm]	2.70" [69mm]
F	2.37" [67mm]	2.08" [53mm]	2.08" [53mm]

ORDERING INFO:

9X4 HVAC GRG DIFFUSER
24X1-5/8 HVAC GRG DIFFUSER
24X1-5/8 HVAC GRG DIFFUSER

Model#: 50223
Model#: 50224
Model# 50225

212 Avenida Fabricante
San Clemente, CA 92672
(949) 492 - 7777

As part of its policy of continuous research and product development, the company reserves the right to change or withdraw specifications without prior notice.

TRUFIG.COM

TRUFIG and the TRUFIG Logo are trademarks of Dana Innovations. © 2012 Dana Innovations. All rights reserved.



TRUFIG

TYPE:

CATALOG:

PROJECT:

DATE: